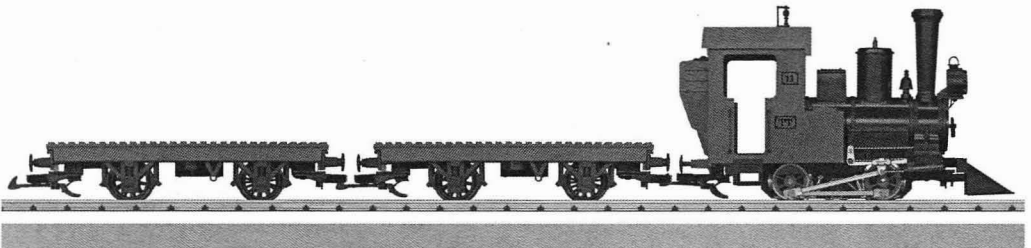




Bedienungsanleitung
Instruction Manual
Notice d'utilisation
Gebruiksaanwijzing
Instrucciones de empleo
Istruzioni di impiego



(D) (GB) (F) (NL) (E) (I)

Starter-Set
90463

2.3 Connections for the Power Pack

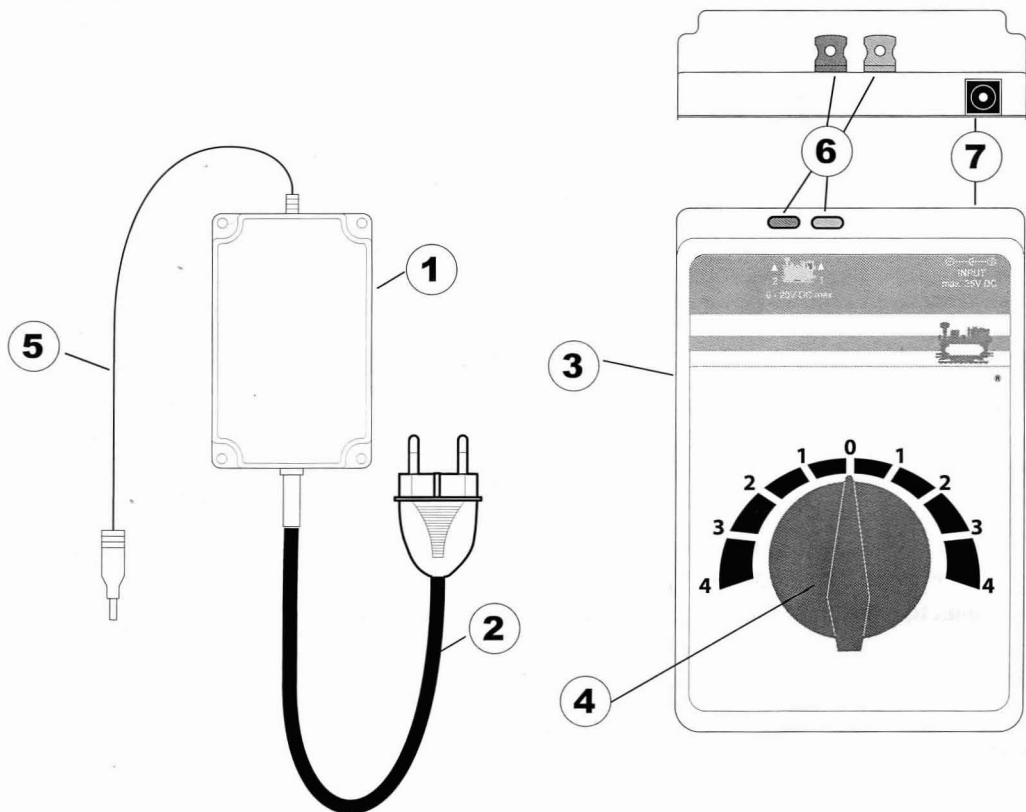
The power pack may not be plugged into the wall outlet until the wiring for the layout is finished.

2.4 Technical Data

See the specifications plate on the power pack.

Power Pack • Train Controller

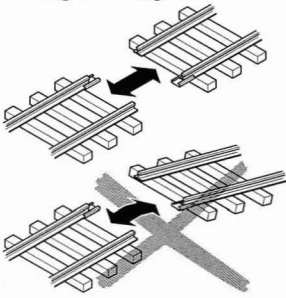
- 1 - Power Pack
- 2 - Connection plug
- 3 - Train controller
- 4 - Speed controller
- 5 - Connection: Control Boxes
- 6 - Connection: Track
- 7 - Connection: Power Pack



2.5 Setup

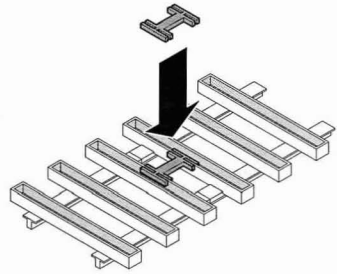
1

Putting track together



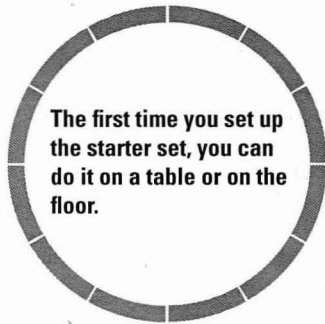
2

Keeping track together



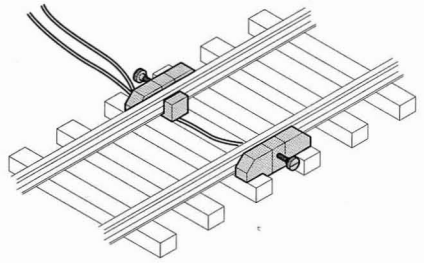
3

Setting up track



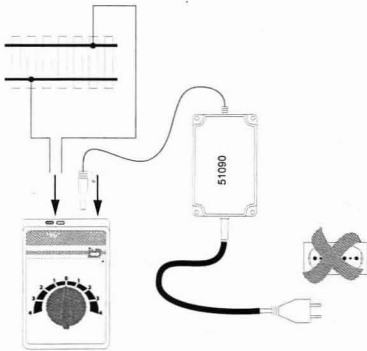
4

Wire connections for track



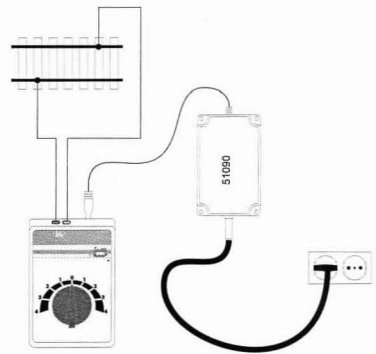
5

Connecting track to the locomotive controller and the switched mode power pack



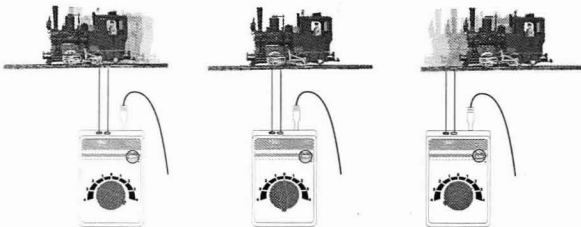
6

Connecting the switched mode power pack to the wall outlet



7

Running the train



3. Short Circuit or Overload

Overload Protection

A built-in overload protection protects the power pack in the event of an overload or a short circuit. The locomotives will come to a stop, solenoid accessories cannot be controlled, and all lamps/lights connected to the layout will go out.

The following procedure is recommended:

1. Unplug the power pack from the wall outlet.
2. Look on the layout for the cause of the short circuit and correct it.
3. After about 1 minute the overload protection will go back to regular operation. After this period of time has passed, the power pack can be used again.

If the power pack shuts off again without a short circuit being found, then the power pack is overloaded. In this situation the number of users on the layout (locomotives, solenoid accessories, and lamps/lights) must be reduced.

4. Trouble Running the Train

- If the locomotive does not run, check to make sure that the connections (see setup) are correct or that the wire insulation was pushed into the terminal or that the switched mode power pack is plugged into the power outlet.
- If the locomotive becomes damaged, do not use the locomotive anymore. If car becomes damaged, remove this car from the train and do not use it anymore.

5. Cleaning and Maintenance

- Check to see if hair or dirt gets on the axles on the train and remove this hair or dirt from the axles with the help of a pair of tweezers so that the train runs correctly.
- Der Zug kann mit einem trockenen, fusselfreien Tuch oder einem weichen Pinsel gereinigt werden.
- Additional information about servicing your locomotive can be found in the instructions for it.

6. Disposing



Products marked with a trash container with a line through it may not be disposed of at the end of their useful life in the normal household trash. They must be taken to a collection point for the recycling of electrical and electronic devices. There is a symbol on the product, the operating instructions, or the packaging to this effect. The materials in these items can be used again according to this marking. By reusing old devices, materially recycling, or recycling in some other form of old devices such as these you make an important contribution to the protection of our environment. Please ask your city, town, community, or county authorities for the location of the appropriate disposal site.

7. Warranty

The warranty card included with this product specifies the warranty conditions.

- Please contact your authorized Märklin dealer for repairs or contact:
Gebr. Märklin & Cie. GmbH
Reparaturservice
Stuttgarter Str. 55 - 57
73033 Göppingen
Germany
Tel: +49 7161 608 222
E-Mail: Service@maerklin.de